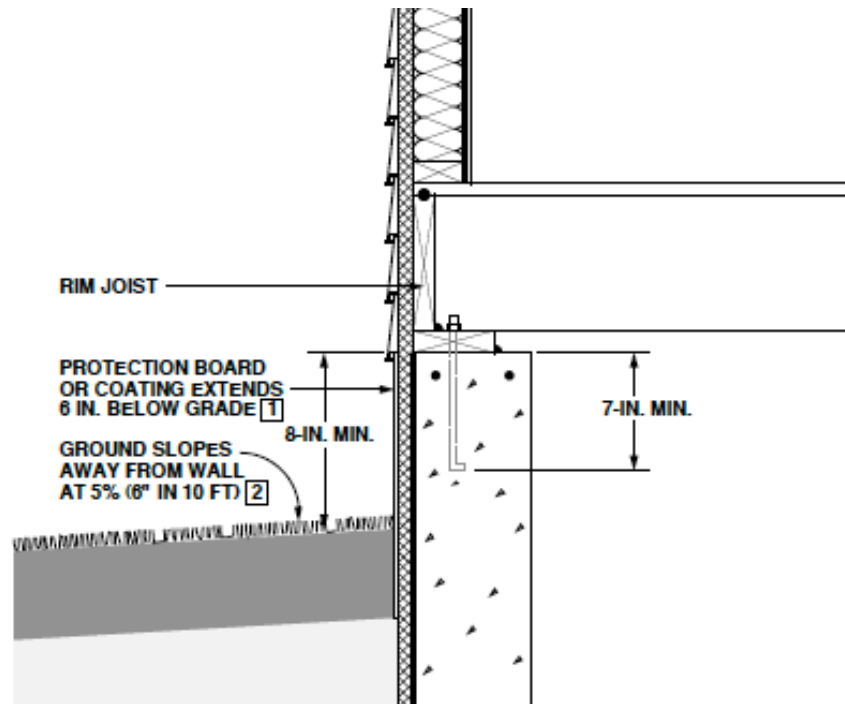


## Typical Raised Foundation Detail



**Figure 2-7: System of Key Numbers in Construction Drawings that Refer to Notes on Following Pages**

The above detail is from the Oak Ridge National Laboratory "Builder's Foundation Handbook" #ORNL/CON-295, which can be found at: [www.wbdg.org/ccb/NATLAB/ORNL/ornl\\_con295.pdf](http://www.wbdg.org/ccb/NATLAB/ORNL/ornl_con295.pdf)

The following notes were derived from reading the text:

The clearance and grading requirements are the same for both Raised and Slab foundations.

When the outside ground is dirt, a minimum 8" clearance is called for.

When the outside ground is concrete a minimum 4" clearance is called for.

At a doorway a minimum 1" clearance is called for.

